

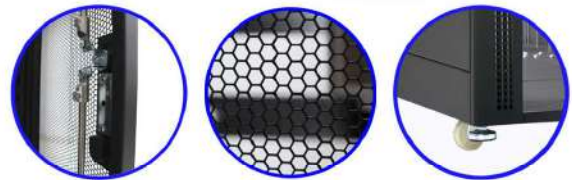


***Solutions For Your
Rack System***
www.abba-rack.com

**ABBATM
RACK**

www.abba-rack.com

Perforated Door



Specification 19" Perforated Door - Closed Rack

Part Number	Size	Width (mm)	Height (mm)	Depth (mm)
NC20-10900-T	20U	600	1025	900
NC20-11150-T	20U	600	1025	1150
NC30-10900-T	30U	600	1470	900
NC30-11150-T	30U	600	1470	1150
NC42-10900-T	42U	600	2002	900
NC42-11150-T	42U	600	2002	1150
NC45-10900-T	45U	600	2140	900
NC45-11150-T	45U	600	2140	1150

Specification 24" Perforated Door - Closed Rack

Part Number	Size	Width (mm)	Height (mm)	Depth (mm)
NC42-20900-T	42U	800	2002	900
NC42-21150-T	42U	800	2002	1150
NC45-20900-T	45U	800	2140	900
NC45-21150-T	45U	800	2140	1150

Features :

1. 19" and 24" Closed rack type available
2. Perforated door enable ventilation and protection
3. Various optional accessories and easy to assemble
4. Precise dimension and craftsmanship
5. Top and bottom with cable entry
6. High quality powder coated
7. Easy removable with dual section side panels
8. Hexagon perforated to ensure maximum air flow
9. High quality adjustable screw leveling feet
10. Easy to assembled or disassembled
11. Compact structure for strong build quality and high precision

Closed Rack



Glass Door



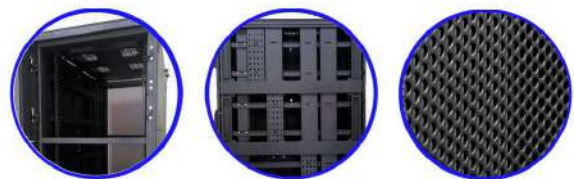
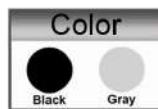
Features:

1. 19" and 24" Closed rack type available
2. Tempered transparent glass front door
3. Various optional accessories and easy to assemble
4. Precise dimension and craftsmanship
5. Top and bottom with cable entry
6. High quality powder coated
7. Easy removable with dual section side panels
8. High quality adjustable screw leveling feet
9. Easy to assembled or disassembled
10. Compact structure for strong build quality and high precision

Specification 19" Glass Door - Closed Rack				
Part Number	Size	Width (mm)	Hight (mm)	Depth (mm)
NC20-10900-GG/GB	20U	600	1025	900
NC20-11150-GG/GB	20U	600	1025	1150
NC30-10900-GG/GB	30U	600	1470	900
NC30-11150-GG/GB	30U	600	1470	1150
NC42-10900-GG/GB	42U	600	2002	900
NC42-11150-GG/GB	42U	600	2002	1150
NC45-10900-GG/GB	45U	600	2140	900
NC45-11150-GG/GB	45U	600	2140	1150

Specification 24" Glass Door - Closed Rack				
Part Number	Size	Width (mm)	Hight (mm)	Depth (mm)
NC42-20900-GG/GB	42U	800	2002	900
NC42-21150-GG/GB	42U	800	2002	1150
NC45-20900-GG/GB	45U	800	2140	900
NC45-21150-GG/GB	45U	800	2140	1150

Colocation Server Rack



Features :

- Available with up to 4 separate sections
- Fully assembly and ready to use
- 19" & 24" and custom width options
- Perforated, tempered glass and custom door options
- Available sizes : 42U and 45U
- Standard 19" mounting holes with adjustable dimension
- Sealed cable channels accessible only to individual user
- Available customized on requirements

Specification 19" Colocation Server Rack

Part Number	Compartment	Size	Width (mm)	Height (mm)	Depth (mm)
C42-10900CR-B	2 Section	42U 19"	600	2075	900
C42-11150CR-B	2 Section	42U 19"	600	2075	1150
C45-10900CR-3C-B	3 Section	45U 19"	600	2210	900
C45-11150CR-3C-B	4 Section	45U 19"	600	2210	1150

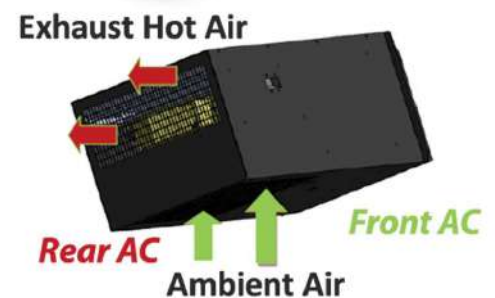
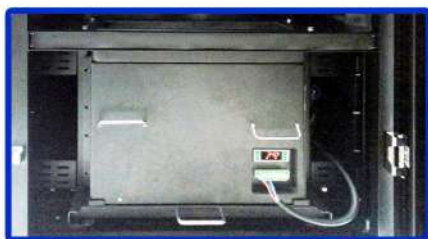
Specification 24" Colocation Server Rack

Part Number	Compartment	Size	Width (mm)	Height (mm)	Depth (mm)
C42-20900CR-B	2 Section	42U 24"	800	2075	900
C42-21150CR-B	2 Section	42U 24"	800	2075	1150
C45-20900CR-3C-B	3 Section	45U 24"	800	2210	900
C45-21150CR-4C-B	4 Section	45U 24"	800	2210	1150

Closed Rack



Air Conditioned Server Rack



Features:

1. Closed rack integrate with Cooling is ideal for self containment for security purposes
2. Maximum airflow throughout server rack
3. High quality powder coated, construction and design
4. Fixed mounting rails for support of patch panels, termination blocks and other equipments
5. Solid top panel and bottom panel
6. Solid front and rear door
7. Saves energy with efficient close coupled cooling
8. Available rackmount "U" space 32U & 35U

Spesification Air Conditioned Server Rack

Part Number	Size	Width (mm)	Height (mm)	Depth (mm)
C42-21100-AC-B	42U	800	2002	1100
C42-21100-AC-G	42U	800	2002	1100
C45-21100-AC-B	45U	800	2140	1100
C45-21100-AC-G	45U	800	2140	1100



Biometric Server Rack



Features:

1. 19" closed rack with Biometric Access Control
2. Available option with stand alone access control BT1 and networked access control W2000
3. Multi mode authentication with 3 in 1 access control system with Fingerprint / RFID card / PIN
4. Fixed mounting rails for support of patch panels, termination blocks and other equipments
5. High quality powder coated, construction and design
6. Material options : SPCC Steel, Aluminium and Stainless Steel
7. Easy installation, operation and management.

Spesification Biometric Server Rack - Closed Rack				
Part Number	Size	Width (mm)	Height (mm)	Depth (mm)
ABBA-42-11150-W2000-B	42U	600	2002	1150
ABBA-42-11150-W2000-G	42U	600	2002	1150
ABBA-42-11150-BT1-B	42U	600	2002	1150
ABBA-42-11150-BT1-G	42U	600	2002	1150

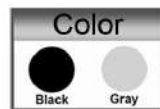
Closed Rack



Intelligent Handle Rack



LED Light Bar

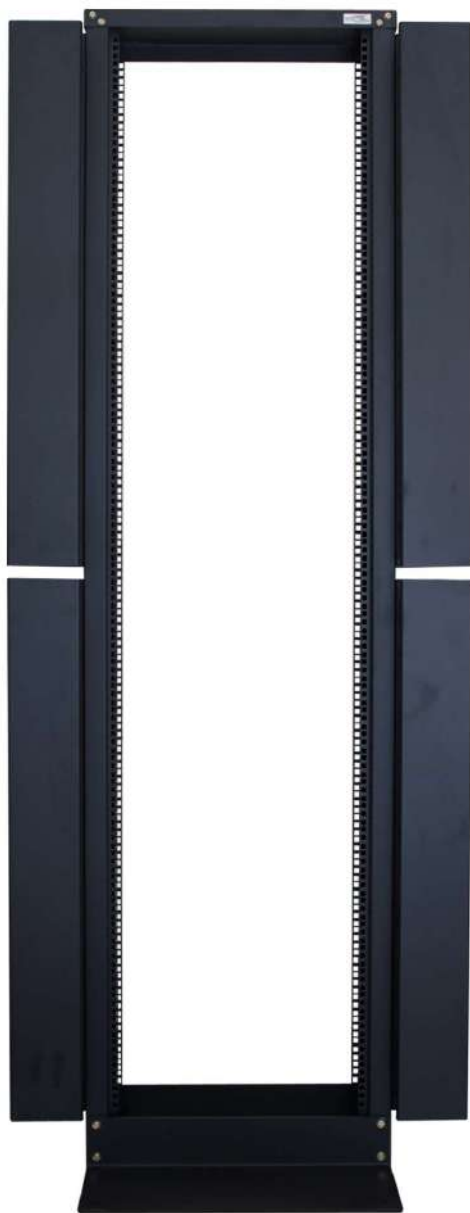


Features:

1. 19" closed rack with secured Door Lock access control
2. Cabinet LED light bar with IR sensor and handle LED for Lock Status Indication
3. Proximity & MiFARE Compatible
4. Fixed mounting rails for support of patch panels, termination blocks and other equipments
5. High quality powder coated, construction and design
6. High density front and rear door enable ventilation and protection
7. Easy installation, operation and management.

Spesification Intelligent Handle Rack - Closed Rack

Part Number	Size	Width (mm)	Height (mm)	Depth (mm)
C42-11150-PG/PB-IHLB	42U	600	2002	1150
C45-11150-PG/PB-IHLB	45U	600	2140	1150
C42-21150-PG/PB-IHLB	42U	800	2002	1150
C45-21150-PG/PB-IHLB	45U	800	2140	1150



Specification Open Entry Rack

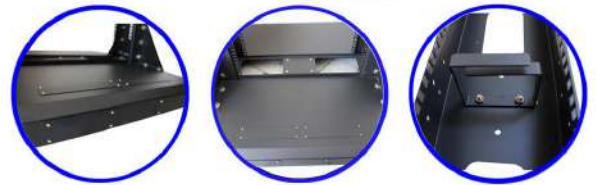
Part Number	Size	Width (mm)	Hight (mm)	Depth (mm)
O42-B-CD	42U	820	2020	580
O45-B-CD	45U	820	2150	580
O42-G-CD	42U	820	2020	580
O42-G-CD	45U	820	2150	580

Features :

- Reduced installation time
- Maximizing useable space and minimize footprint
- Totally open for ease of cross patching
- Flexible configuration
- 19" standard installation with cage nut fixings
- Size options include 42U and 45U
- Open Rack is designed to be bolted to the floor
- Cable Spool available
- Open Rack with cable duct 14.5x15cm for cover the space to protect or manage cables
- High quality construction and design

Open Rack

Standard Open Rack



Features :

- Reduced installation time
- High quality construction and design
- Totally open constructions for easy of cross patching
- 19" standard installation and flexible configuration
- Standard cage nut fixings
- Easy access to cables for moves, add and changes
- Various optional accessories according to requirement (cable management, removable working panel, etc)

Specification Standard Open Rack				
Part Number	Size	Width (mm)	Hight (mm)	Base (mm)
O25-G/B	25U	615	1210	800
O30-G/B	30U	615	1430	800
O42-G/B	42U	615	1960	800
O45-G/B	45U	615	2100	800

Single Door & Double Door



Specification Wallmounted Rack Single Door				
Part Number	Size	Width (mm)	Height (mm)	Depth (mm)
W02-500-SG/SB	2U	550	147	500
W04-500-SG/SB	4U	550	260	500
W06-500-SG/SB	6U	550	350	500
W08-500-SG/SB	8U	550	440	500
W10-500-SG/SB	10U	550	530	500
W12-500-SG/SB	12U	550	620	500
W15-500-SG/SB	15U	550	760	500

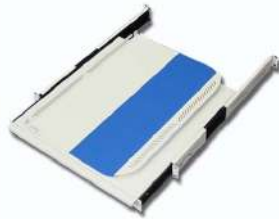
Specification Wallmounted Rack Double Door				
Part Number	Size	Width (mm)	Height (mm)	Depth (mm)
W08-490-DG/BD	8U	600	440	490
W08-600-DG/BD	8U	600	440	600
W12-490-DG/BD	12U	600	620	490
W12-600-DG/BD	12U	600	620	600
W15-490-DG/BD	15U	600	760	490
W15-600-DG/BD	15U	600	760	600

When you don't need a full server rack cabinet, consider a wallmount racks, they're versatile choice conserving space and money. Our wallmount racks come in sizes, heights and depths. The wallmount rack has a glass front so you can quickly monitor your installation. This cabinet is perfect for almost any wiring room.

Wire Management



Telescopic Drawer



Digital Temperature



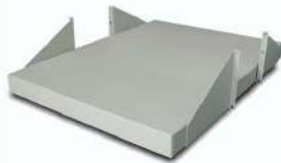
Vertical Cable Duct



Flat Shelf



Flat Shelf
For Open Rack



Castor | Cagenut
M6 Screw



Vertical Cable Tray



Cantilever



PDU



FAN



Blank Panel



Outdoor Standing Closed Rack (ODC)



Features:

1. 19" Outdoor standing closed rack type
2. Outdoor cabinet category IP31, IP55, IP56, IP65, etc
3. High quality powder coated, construction and design
4. Fixed mounting rails for support of patch panels, termination blocks and other equipments
5. Various optional accessories according to requirements (cable management, pdu, fans, utp panel, fo panel, etc)
6. Material options : SPCC Steel, Aluminium and Stainless Steel
7. Available customized on requirements

Spesification Outdoor Cabinet - Closed Rack

Part Number	Size	Width (mm)	Height (mm)	Depth (mm)
C20U-900CROIP31-RAL7032	20U	600	1150	900
C30U-900CROIP31-RAL7032	30U	600	1600	900
C42U-900CROIP31-RAL7032	42U	600	2150	900
C20U-900CROIP65-RAL7032	20U	600	1150	900
C30U-900CROIP65-RAL7032	30U	600	1600	900
C42U-900CROIP65-RAL7032	42U	600	2150	900

Outdoor Wallmounted Rack



Outdoor Wall + Pole Mounted Rack



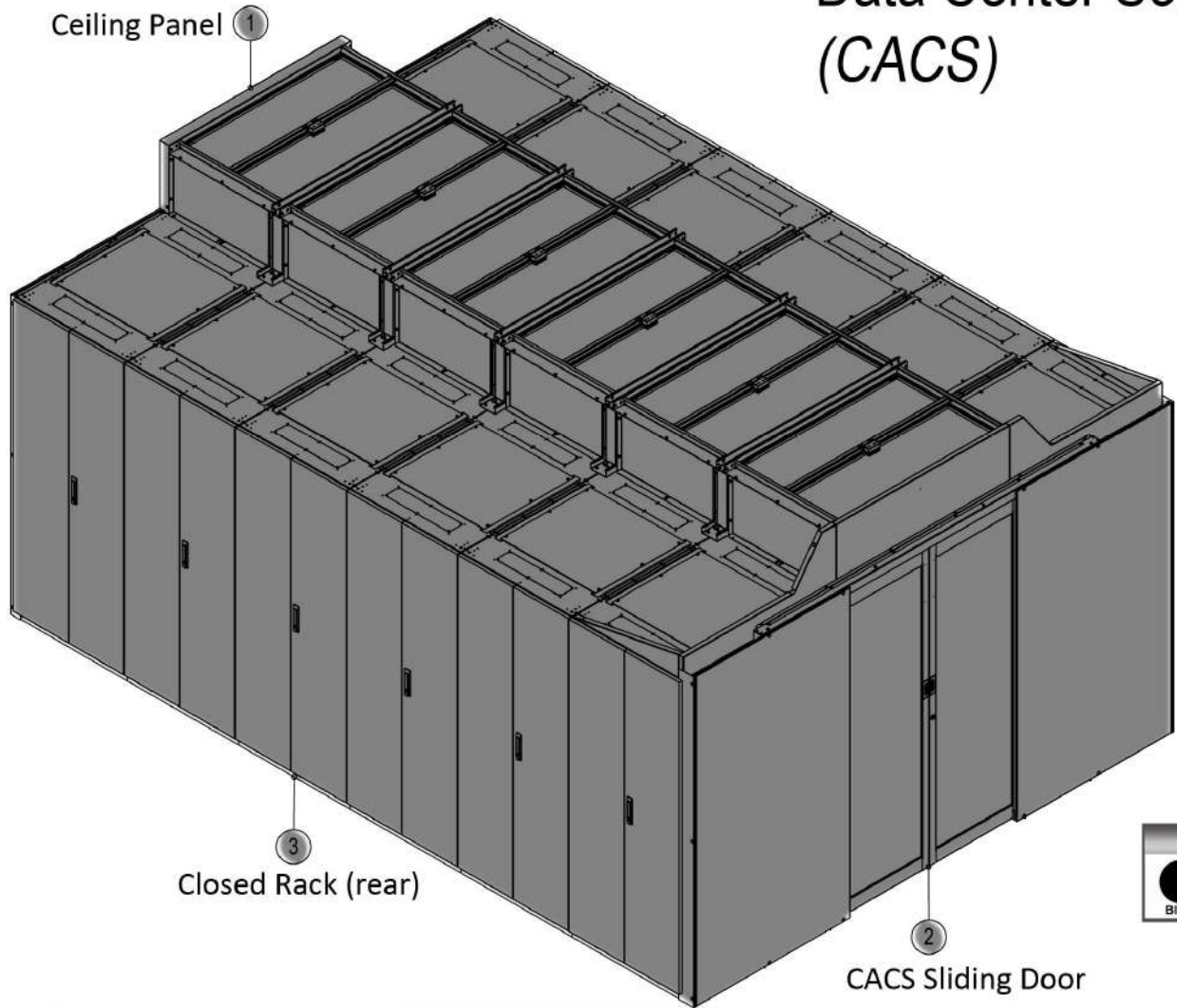
Features:

1. 19" standard installation wallmounted rack type.
2. Outdoor wallmounted rack IP55, IP56, IP66 etc.
3. Front door and rear side enable ventilation and protection.
4. High quality powder coated, construction and design
5. Flexible instalation : makes it possible mount to the wall and pole suits both indoor and outdoor.
6. Fixed mounting rails, ideal for support of patch panels, termination blocks and other equipments

Spesification Wallmounted Rack Outdoor				
Part Number	Size	Width (mm)	Height (mm)	Depth (mm)
W08-600-OUT-RAL7037	8U	600	465	600
W12-600-OUT-RAL7037	12U	600	650	600
W15-600-OUT-RAL7037	15U	600	780	600

7. Various optional accessories according to requirements (cable management, PDU, Fans, UTP Panel, FO panel etc)
8. Material options : SPCC steel, aluminium & stainless steel
9. Available customized on requirements

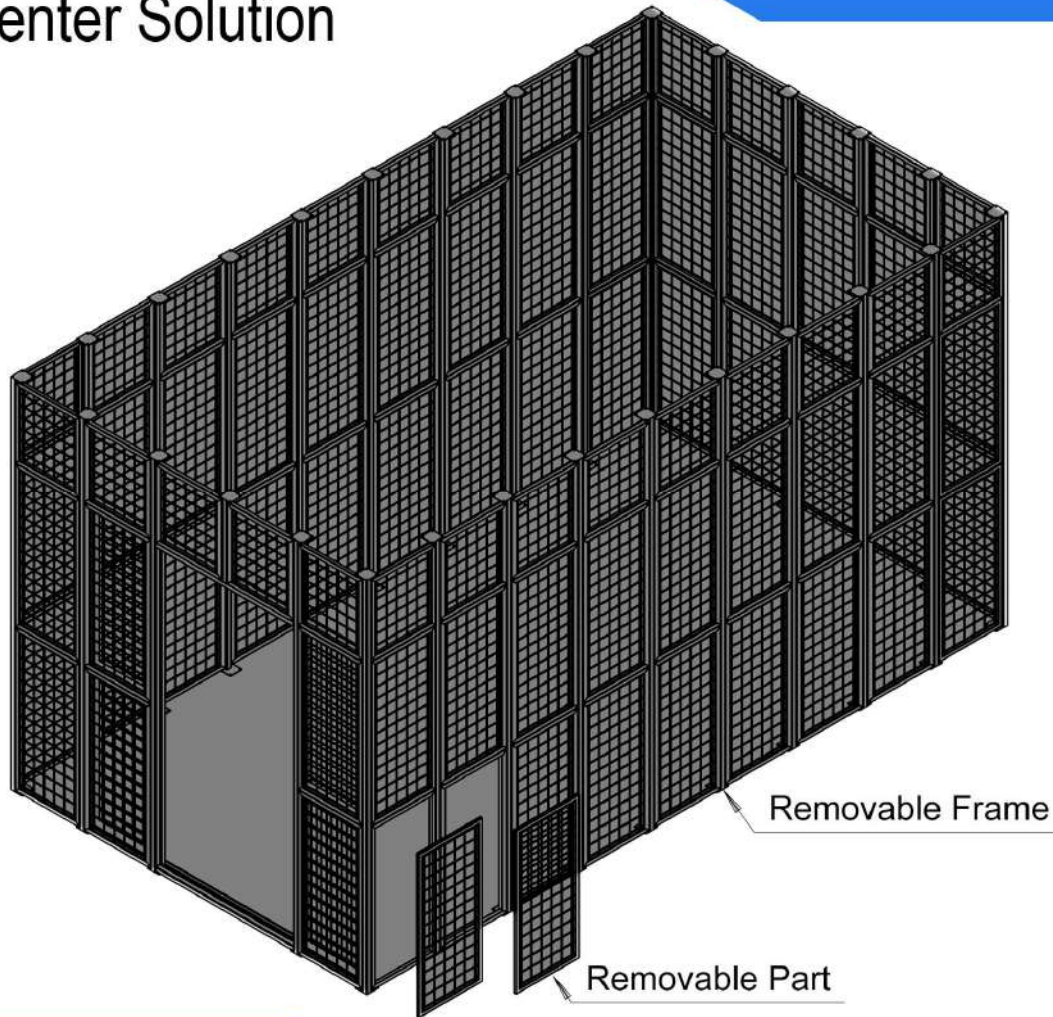
Data Center Solution (CACS)



Features:

1. Isolate the hot and cold airflow through each cabinet
2. Reduce energy cost and optimize power availability
3. Result in improved cooling that significantly increase energy savings
4. Extends the life of active equipment like switches and servers by reducing the heat load
5. Provide more cooling with less energy by containing and directing the cold air to where it is needed
6. High quality powder coated, construction and design
7. Helpful to achieve to be a green data centre cooperation & make a contribution towards the environment
8. Ceiling options : Auto Open Ceiling panel and Fixed Ceiling Panel
9. Available option with Hot Aisle Containment

Data Center Solution



ABBA-RACK cages system provide a method of segregating customer racks and equipment into defined zones, providing a high level security for equipment which is contains multiple user. With the increasing need to provide a secure method of housing equipment within a co-location data center, ABBA-RACK Cages system can provide and install with the customized design.

Features :

1. provide security enhanced for data center environments
2. Height 2400mm or customized height
3. Varying Panels designs with a width of 1200mm and height of 1200mm or can be customized
4. Optional key and electronic locking system
5. Modular design and easily expandable
6. High quality powder coated, construction and design